



Virginia Healthcare Workforce Briefs

Indicators from the Bureau of Labor Statistics'
Current Employment Statistics Survey
Series 1: State & National Employment

Series 1, Issue 92

November 2019

Inside this Brief:

Virginia HC&SA Employment	2
Virginia Employment	2
National Employment	3
State Employment Growth	3
About the Data	4

Data in the report are seasonally adjusted. Self-employed persons, including health professionals in private practice, are not included.

Highlights

- ◆ According to preliminary estimates, Virginia's Health Care & Social Assistance (HC&SA) sector enjoyed its sixth consecutive month of positive employment growth with the creation of 500 new jobs in October. This gain represents a one-month annualized employment growth rate of 1.3%. So far this year, Virginia's HC&SA sector has created 11,500 new jobs across the state.
- ◆ Virginia's total nonfarm payroll increased by 8,000 in October, a gain that translates into a 2.4% annualized growth rate. Over the past year, Virginia's total nonfarm payroll has increased by 29,600, and the state's HC&SA sector has been responsible for 46% of this growth.
- ◆ The national HC&SA sector experienced its weakest monthly employment gain since May after creating 34,200 new jobs in October, which represents a one-month annualized growth rate of 2.0%. So far this year, the national HC&SA sector has increased employment by 451,100.
- ◆ As with employment in the national HC&SA sector, the nation's total nonfarm payroll experienced a relatively weak month of growth. In October, the nation's total nonfarm payroll grew by 128,000. This gain translates into a 1.0% annualized growth rate.

Data in Brief

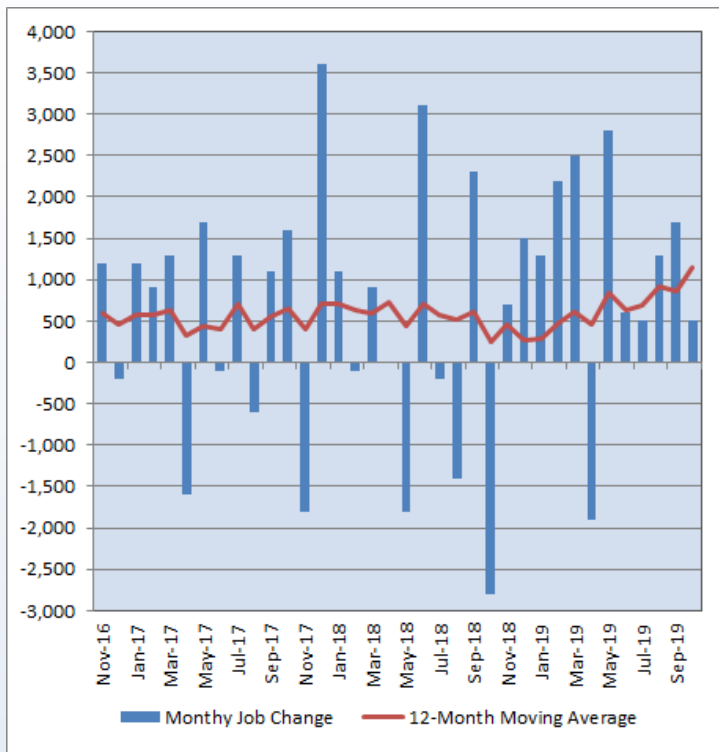
Seasonally Adjusted*	Employment, in Thousands				Growth Rate, Annualized		
	Oct. 2018	July 2019	Sept. 2019	Oct. 2019	12 Month	3 Month	1 Month
Nonfarm, Total							
Virginia	4,000.1	4,040.7	4,021.7	4,029.7	0.7%	-1.1%	2.4%
National	149,852.0	151,418.0	151,817.0	151,945.0	1.4%	1.4%	1.0%
Health Care & Social Assistance							
Virginia	443.7	453.9	456.9	457.4	3.1%	3.1%	1.3%
National	20,076.6	20,483.4	20,583.0	20,617.2	2.7%	2.6%	2.0%
All Other Nonfarm							
Virginia	3,556.4	3,586.8	3,564.8	3,572.3	0.4%	-1.6%	2.6%
National	129,775.4	130,934.6	131,234.0	131,327.8	1.2%	1.2%	0.9%

Preliminary estimates are italicized

*Seasonally adjusted data are adjusted by the Bureau of Labor Statistics to account for weather, holidays and other seasonal changes. Economists use seasonally adjusted data to reveal underlying trends over time. This series uses seasonally adjusted data exclusively. When comparing data in this series to other HWDC series, or publications from other sources, it is important to note whether the data reported have been seasonally adjusted.

Virginia HC&SA Employment

Figure 1: Monthly Change in Employment in Virginia’s Health Care & Social Assistance Sector, Seasonally Adjusted.



According to preliminary data released on Tuesday, November 19, 2019, by the U.S. Department of Labor, Bureau of Labor Statistics, Virginia’s Health Care & Social Assistance (HC&SA) sector created 500 new jobs in October, a gain that translates into a 1.3% annualized growth rate. With this gain, Virginia’s HC&SA sector has now increased employment in each of the past six months. Over these six consecutive months of positive employment growth, Virginia’s HC&SA sector has added 7,400 jobs to the state’s economy.

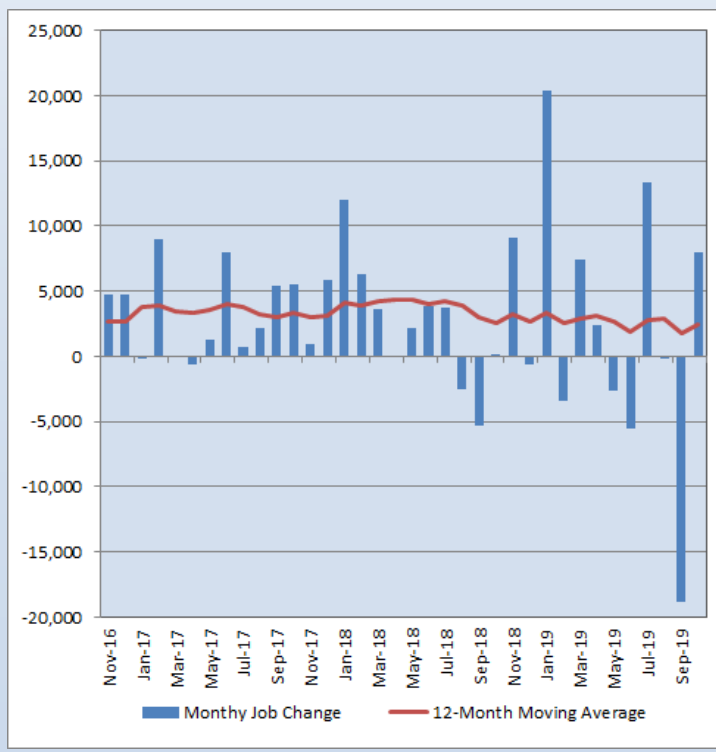
Although this month’s job gain was relatively modest, it still continues a long-term trend of consistently positive employment growth in the state’s HC&SA sector. HC&SA employment in Virginia has increased in 11 of the past 12 months. During this past year, employment in Virginia’s HC&SA sector has increased by an average of 1,142 jobs per month. At its current level, this represents the highest value for the 12-month moving average of the employment change in Virginia’s HC&SA sector in more than three years. In addition, this average monthly job gain translates into a 12-month employment growth rate of 3.1%.

Virginia Employment

While Virginia’s HC&SA sector has enjoyed consistently positive job growth in 2019, the growth in the state’s total nonfarm payroll has been far more erratic. Virginia’s total nonfarm payroll has fallen in half of the first ten months of this year, including a particularly severe decline in September. However, Virginia’s total nonfarm payroll was able to rebound from that decline with an increase of 8,000 in October. This gain represents a one-month annualized growth rate of 2.4%. This gain is well above the long-term average for Virginia’s total nonfarm payroll, which has grown by 0.7% over the past year.

Virginia’s HC&SA sector remains responsible for a significant fraction of the long-term growth in the state’s total nonfarm payroll. Over the previous 12 months, Virginia’s HC&SA sector has created 13,700 jobs, and this employment gain represents 46% of the overall growth in the state’s total nonfarm payroll during the same time period. This is well above the overall nationwide average given that the national HC&SA sector has been responsible for just over one-quarter of all growth in the nation’s total nonfarm payroll over the past year.

Figure 2: Monthly Change in Employment in Virginia’s Total Nonfarm Payroll, Seasonally Adjusted.

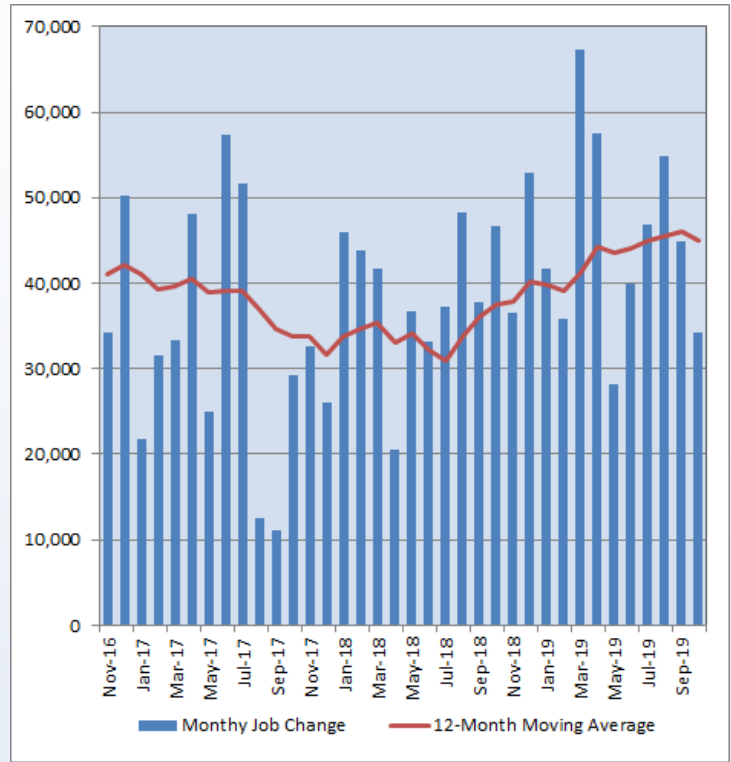


National Employment

For the second consecutive month, the employment gain in the national HC&SA sector was below its long-term average. In October, the national HC&SA sector created 34,200 jobs, an employment gain that translates into a one-month annualized growth rate of 2.0%. In addition, this represents the weakest monthly employment gain in the national HC&SA sector since May. This led to a decline in the 12-month moving average of the employment change in the national HC&SA sector, which has created an average of 45,050 jobs per month over the past year.

The national HC&SA sector was responsible for more than one-quarter of all growth in the nation’s total nonfarm payroll during the month. In October, the nation’s total nonfarm payroll increased by 128,000. This gain translates into a one-month annualized growth rate of 1.0%. The growth in the nation’s total nonfarm payroll has slowed down considerably over the past two months. In August, the nation’s total nonfarm payroll increased by 219,000. This represented the largest monthly gain in the nation’s total nonfarm payroll since January. However, October’s result represents its lowest monthly gain in five months.

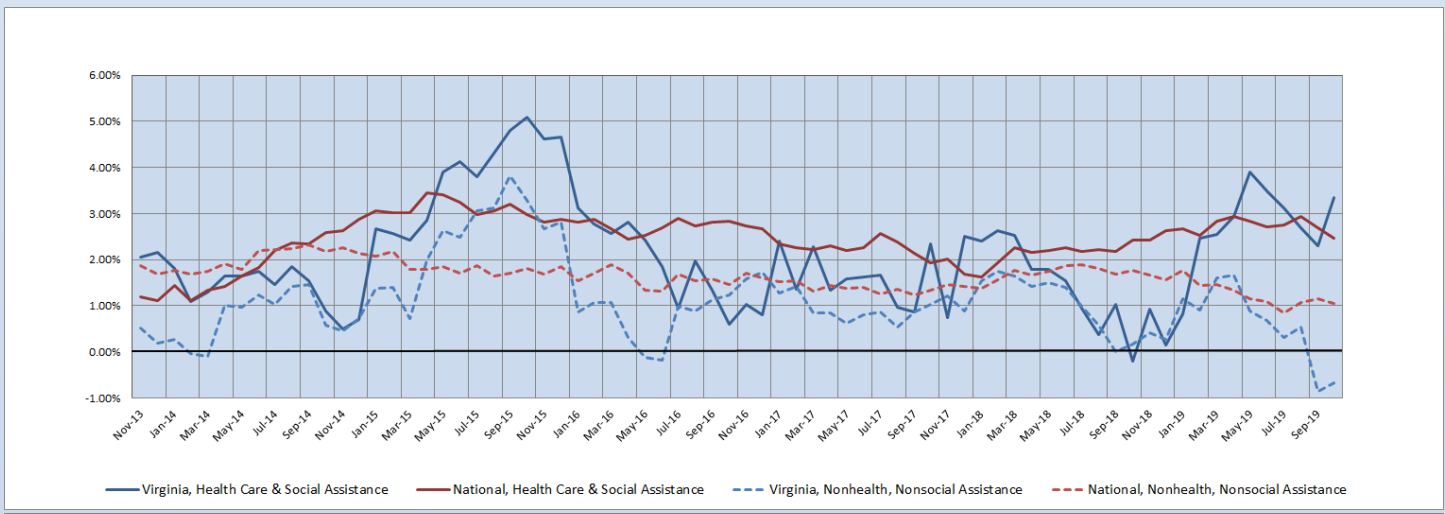
Figure 3: Monthly Change in Employment in National Health Care & Social Assistance Sector, Seasonally Adjusted



State Employment Growth

The six-month moving average of the employment growth rate in Virginia’s HC&SA sector reached its highest value in four months after increasing from 2.30% to 3.34% in October. While the comparable moving average for Virginia’s total nonfarm payroll also increased in October from -0.85% to -0.67%, it still remained negative for the second consecutive month. Meanwhile, both the national HC&SA sector and the nation’s total nonfarm payroll experienced declines in their respective moving averages in October. The six-month moving average of the employment growth rate in the national HC&SA sector fell from 2.70% to 2.46%, thereby reaching its lowest value in nearly one year. As for the growth rate in the nation’s total nonfarm payroll, its six-month moving average fell from 1.15% to 1.05% in October.

Figure 4: Six-Month Moving Average, Employment Growth, Seasonally Adjusted



**Healthcare Workforce
Data Center**

Perimeter Center
9960 Mayland Drive, Suite 300
Henrico, VA 23233-1463

Phone: (804) 367-2115
Fax: (804) 527-4434
E-mail: hwdc@dhp.virginia.gov
Website: [www.dhp.virginia.gov/PublicResources/
HealthcareWorkforceDataCenter/](http://www.dhp.virginia.gov/PublicResources/HealthcareWorkforceDataCenter/)

HWDC Staff:

Elizabeth Carter, PhD <i>Executive Director</i>	Yetty Shobo, PhD <i>Deputy Director</i>
Laura Jackson, MSHSA <i>Operations Manager</i>	Rajana Siva, MBA <i>Research Analyst</i>
Christopher Coyle <i>Research Assistant</i>	

The Department of Health Professions Healthcare Workforce Data Center works to improve the data collection and measurement of Virginia's healthcare workforce through regular assessment of workforce supply and demand issues among the 80 professions and 350,000 practitioners licensed in Virginia by DHP.

The HWDC collects data on Virginia's licensed health professionals through surveys completed during the online license renewal and application process. Survey results and data may be accessed on our website: www.dhp.virginia.gov/hwdc/.

The HWDC also provides a series of Virginia Healthcare Workforce Briefs based on data collected by the US Department of Labor's Bureau of Labor Statistics and the US Department of Commerce' Bureau of Economic Analysis.

Virginia Healthcare Workforce Briefs:

Series 1: State & National Employment (Monthly)

Series 2: Virginia Regional Employment (Monthly)

Series 3: Income & Compensation (Quarterly)

Follow us on. . .

Tumblr: <http://vahwdc.tumblr.com/>

About the Data

Data in this report are from the US Department of Labor, Bureau of Labor Statistics' Current Employment Statistics program. The CES program surveys about 143,000 businesses and government agencies monthly. Unless otherwise noted, this series uses seasonally-adjusted data that removes seasonal variations related to weather, holidays, weekends, seasons and other predictable variations. This allows us to better examine underlying trends in the labor market. Data from recent months are preliminary and subject to revision in future releases from the CES. Revisions will be reported in future editions of this series. Unless otherwise noted, the CES data presented in this series:

Includes:

- ◆ Data on employed individuals drawing a paycheck (payroll employees).
- ◆ All employees, regardless of role, occupation or hours worked.
- ◆ HC&SA employees in the private sector only.
- ◆ Persons employed by health professionals in private practice.
- ◆ Both government and private sector workers in nonfarm employment data.

Does not include:

- ◆ Self-employed workers or volunteers, including health professionals in private practice.
 - ◆ HC&SA employees in the public sector. (These are counted as government workers in monthly reports).
 - ◆ Information on hours worked or the quality of employment.
 - ◆ Government workers in HC&SA level data. (Government workers, regardless of occupation and role, are classified as public sector employees).
-